



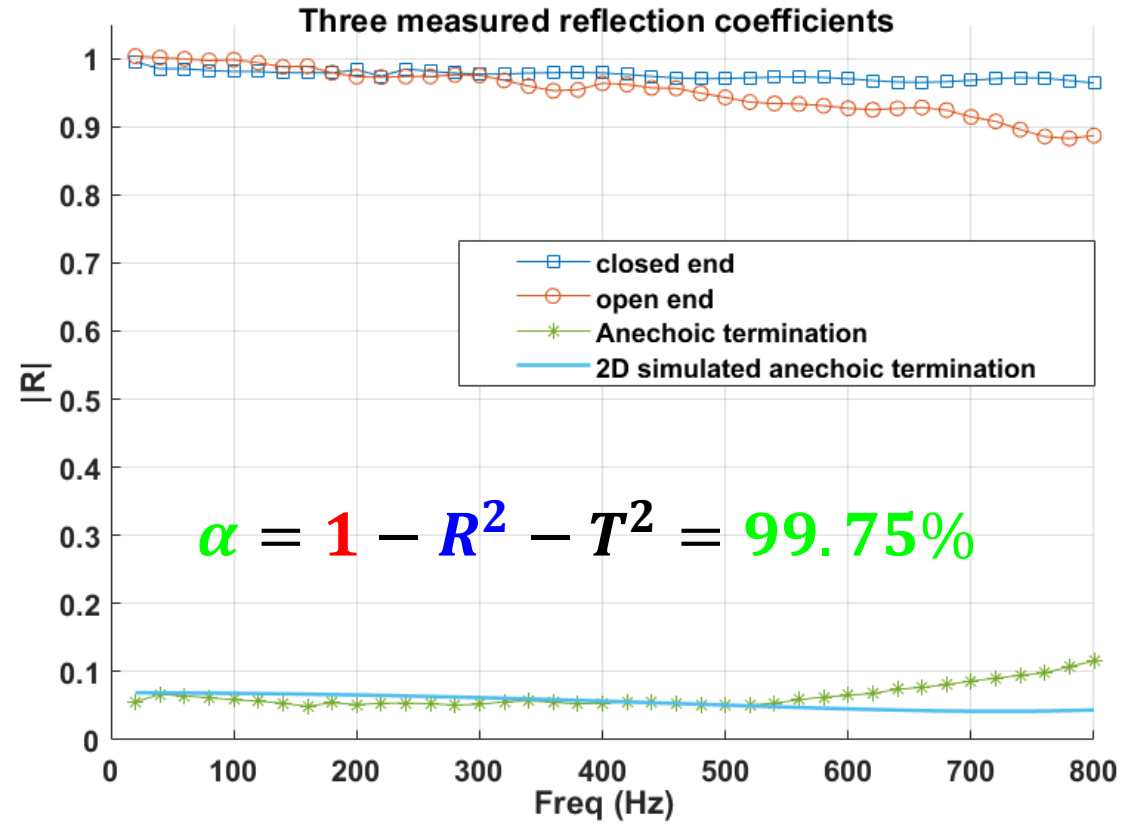
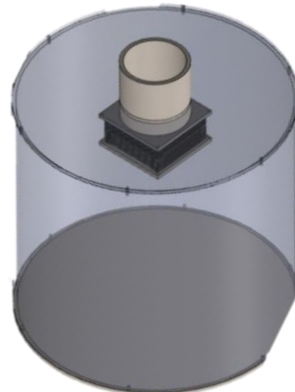
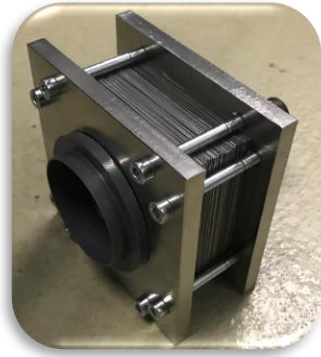
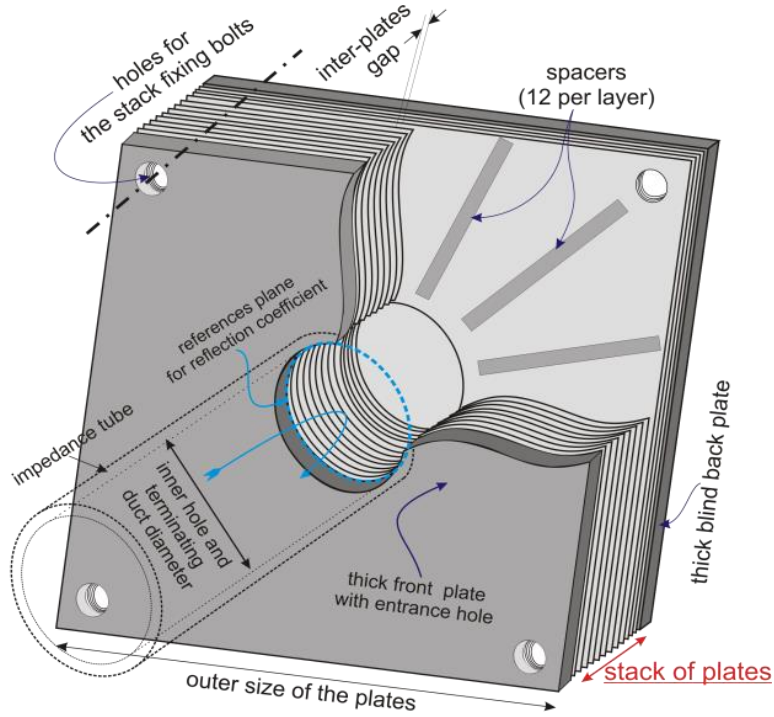
**ATA MUTE**

The Power of Silence

Acoustics and Thermo-Acoustic noise **M**utation

# Anechoic termination™

Stack of plates with air gaps in between and closed end to absorb 99.75% of Acoustic energy at 20 Hz-10 kHz.



We reduce any noise



**ATA MUTE**

The Power of Silence

Acoustics and Thermo-Acoustic noise **Mutation**